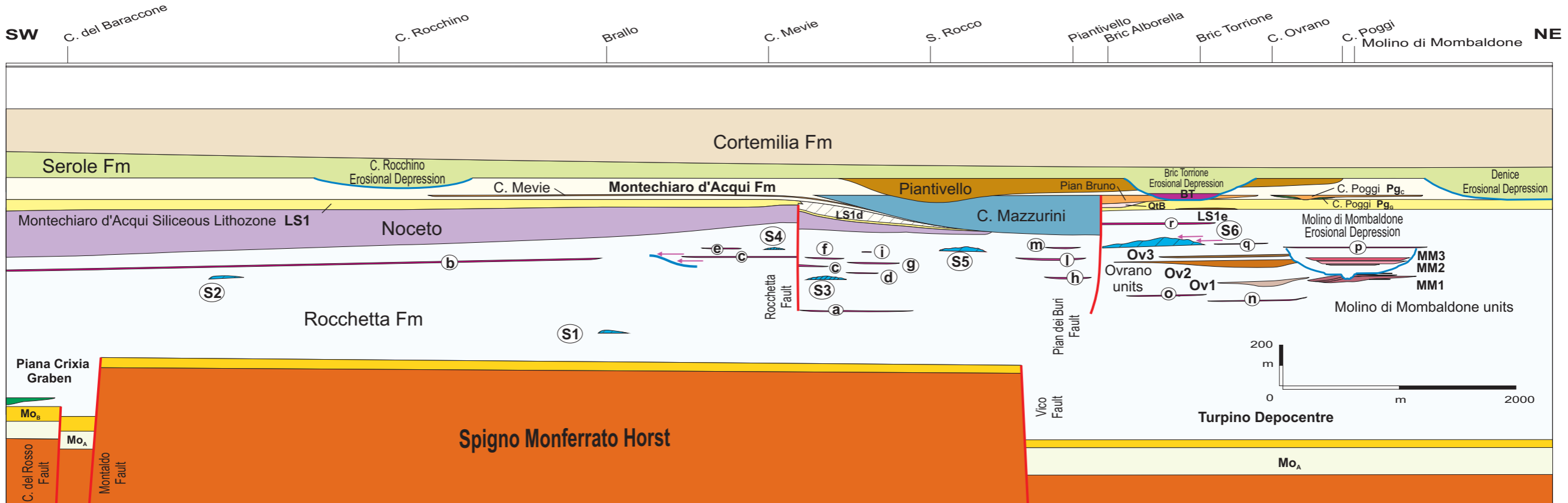


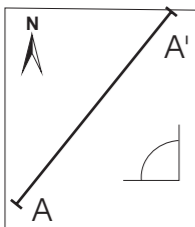
# PLATE I

## CROSS-SECTION OF THE OLIGOCENE-BURDIGALIAN DEPOSITS CROPPING OUT IN THE ROCCAVERANO AREA



**A**

Trace of the cross-section



**N.B.:** Faults post-dating the Cortemilia Fm are not represented in the cross-section. Stratigraphic relationships between the crystalline basement, the Molare Fm and the Rocchetta Fm refer only to the geologic setting of the south-eastern sector. They have been artfully transposed on the plane of the stratigraphic cross-section.

**N.B.:** Turbidite sandstone bodies of the Rocchetta Fm cropping out outside the mapped area NE of the Vico Fault (Turpino Depocentre), are not shown on the cross-section. In such area, moreover, the basement structure is only approximate.

**LS1d** Homogeneous mudstones  
**LS1e** Resedimented glauconitic biocalcarenites  
**S1..S6** Slump Sheets      **a.. r** Minor sandstone bodies  
**QtB** Altitude 483 Sandstones      **BT** Bric Torrione Sandstones  
**MM1, MM2, MM3** Molino di Mombaldone Lower, Middle and Upper Sdt  
**Ov1, Ov2, Ov3** Ovrano Lower, Middle and Upper Sandstones  
**Mo<sub>B</sub>** Molare shelf sandstones  
**Mo<sub>A</sub>** Molare continental conglomerates

**A'**